



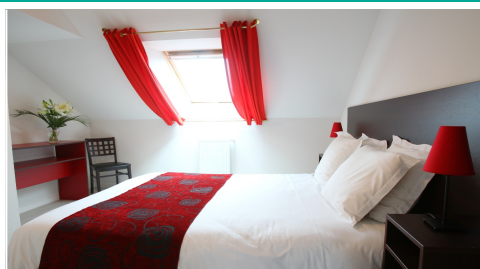
## DUGUESCLIN\*\*\*

### DINAN

Partner Residence



Côtes d'Armor (22) - Brittany - Normandy



[Click here for more images](#)

### A Medieval town with a rich cultural heritage

The charming city of Dinan will take you on a ride through the ages. At the gates of the Côte d'Emeraude, Dinan offers a large range of leisure and other activities where you can relax alone, with family or with friends.

You can explore the town, its chateau-museum, the Clock Tower and its ramparts award charm to this town.

### THE RESIDENCE DUGUESCLIN\*\*\*

The Residence Duguesclin\*\*\* has a privileged location at 15 -minute walk from Dinan's historical town centre. It offers an ideal starting point for discovering the region.

To make your stay an unforgettable one, you will stay in spacious, well-decorated and fullyequipped flats. You can also enjoy the heated outdoor pool to relax yourself after spending the day visiting this beautiful region.

### THE RESIDENCE FACILITIES

- Spacious Flats
- Covered and heated outdoor pool
- 10-minute walk to downtown
- 15-minute walk from the old city center
- Concierge service

Discover Dinan's wonders on [www.mmv.fr](http://www.mmv.fr) and [www.dinan-tourisme.com](http://www.dinan-tourisme.com)

## Lodging

	Qty	m2	
<b>In all apartments (except 2-people studios)</b>			Living room with sofa bed (135 x 190 cm), LCD TV and Internet access Bathroom with a bathtub except for flats designed for people with reduced mobility : Kitchen unit with microwave, refrigerator, 2 electric hobs, small dishwasher and coffee maker
<b>2-person studio apartment</b>	2	20	One bed (160x200cm) in the living room. A bathroom with a bathtub and a toilet.
<b>1-bedroom, 4 ppl</b>	8	40	Bedroom with a double bed (160 x 200 cm). Bathroom and separate toilets (mostly).
<b>1-bedroom, 6 ppl</b>	1	55	A living room with two sofa beds (135 x 190 cm each) and a bedroom with a double bed (160 x 200 cm). Bathroom and separate toilets.
<b>2-bedroom, 6 ppl</b>	1	51 à 67	One bedroom with a double bed (160 x 200 cm) and the second with a double bed (160 x 200 cm). Bathroom and separate toilets.
<b>Accommodation accessible to people with reduced mobility</b>			Some lodgings are accessible to people with reduced mobility. As we cannot guarantee the availability of those, we invite you to contact us for detailed information.

Open from Saturday, March 31st, 2018 to Sunday, November 11th, 2018

## Option

<b>Rent Option</b>	In residence , the price includes : Accommodation on rent. Bed linen. For equipped residences : Access to the swimming pool and Wellness area
--------------------	---

## Catering

● INCLUDED ○ PAYING

<input type="radio"/> <b>Breakfast option</b>	Except Wednesdays and Sundays when it is not School holidays. Drinks: Coffee, tea, fruit juices, milk. Food: bread, pastries, cereals. Fruits: fresh, in salad or in compote. Dairy products, jams. Cold meats and eggs. (indicative list only) This service can be delivered in the breakfast room or in personal rooms, depending on sites.	8€ /adult/day and 5€/children (from 4 to -12 years old). Free for under 4 years old.
<input type="radio"/> <b>Bakery service</b>	Delivery in the morning of fresh bread and croissants and similar products at the reception desk. To book the previous day, payment at the desk.	

## Children

● INCLUDED ○ PAYING

<input checked="" type="radio"/> <b>Baby Kit</b>	On reservation, subject to availability Included: baby bed, high chair, changing mat, potty, bath chair or baby bath
--	---

## Lelsure

● INCLUDED ○ PAYING

- **Covered Heated outdoor swimming pool** Free access every day from 10am to 7pm. Open from May to September, depending on weather conditions. Bathing suit is mandatory; shorts are not allowed. The children are under the responsibility of the parents.
- **Activities close to the residence, with a contribution for some of activities** Aquarium of Saint-Malo, Alligator Bay in Beauvoir, Gold, Bay of Mont Saint-Michel, bowling, karting...

## Services

● INCLUDED ○ PAYING

- **WiFi** Free access in accommodations
- **Car parking** Free parking, depending on availability. Coach parking next to the swimming pool.
- **Beds made upon arrival** Except sofa, convertible, stacked-shelving and bunk beds 10€ per bed
- **Change of bed linen**
- **Houseseeking at the end of stay** Except kitchen and dishes. The accommodation must be restored completely cleaned. However, it is possible to pay for this service to be done. 2-people lodging : 40€; 4-people lodging : 50€; 6-people lodging : 60€
- **Daily stay cleaning** Except kitchen and dishes 80€ for studio apartments and 2-rooms; 120€ for 3-rooms
- **Houseseeking in the middle of stay (beds are not made)** Except kitchen and dishes. Change of bed linen and towels - beds are not made- Studio: 40€; 2-rooms: 50€; 3-rooms: 60€
- **Cleaning kit** Sponge, sachets of diverse cleaning products and 1 dishcloth. 3.90€ per kit
- **Bathroom linen** A bath towel, a hand towel per person +, a bath mat for the apartment. 9€ / kit / person
- **Pets accepted** Compulsory pre booking. Maximum 1 per apartment. Pets must be vaccinated, tattooed, with health book. Dogs of category 1 or 2 are not allowed. 10€ per animal and per day 46€ per animal and per week
- **Comfort package** Beds made upon arrival + Bathroom linens kit + Cleaning at the end of the stay 80€ / 2-people lodging 95€ / 4-people lodging 120€ / 6-people lodging

## Accommodation

● INCLUDED ○ PAYING

**Check In / Check Out for rent** Arrival from 4pm (until the front desk closes)  
Departure before 10am.  
Arrival outside these schedules and opening hours of the reception: thank you for contacting the reception desk beforehand. Keys of the accommodation will be put at the disposal in the safe at the reception and the code communicated to the customer.

○ **Early Check In** Accommodation available from 11 am, subject to availability. 75€ per accommodation

**Welcome and reception** Subject to modifications. Open everyday from 9am to 11pm and from 4pm to 7pm during school holidays. Closed on Wednesdays and Sundays when it is not school holidays.

**Multilingual reception** French, English, German, Italian, Deutschland, Spanish

**Means of payment** Bank cards, Visa, Mastercard, Bank check, Holiday vouchers, money

## Insurance

● INCLUDED ○ PAYING

○ **Go well insured with the Pack Horizon** World insurance Assistance : Cancellation guarantee and repatriation insurance  
Pack Horizon pricing applies to all registered participants of the booking.  
These prices fluctuate depending on the tariff level in which is the amount of the booking. In the case of adding services after initial booking, the price will be modified, if necessary, to reflect the new total amount of the booking.  
This service is not commercialized to our partners Tour Operators.

From 9€ according to booking amount. Detailed prices on <http://www.mmv.fr/cgv.html>

## Other charge

● INCLUDED ○ PAYING

○ **Required application fee** Application fee depending on the specific conditions of each partner

Stay of 5 or over 5 days:  
booking centre: 25€;  
Internet: 15€  
Stay of under 5 days: booking centre: 15€; Internet: 10€

○ **Pledge** 300€ per accommodation

○ **Mandatory Holiday Tax** To be paid at the end of your stay.  
Prices subject to change.

0,90€ per day and per person from age 18

## Contact details

Duguesclin\*\*\*  
 37 rue Louise Weiss  
 22100 Dinan  
 +33 (0)2.96.85.54.80  
 Gps coordinates : 48.453122,-2.061798

## Access

Access by car	RN 12. At the Place Duclos-Pinot roundabout, turn right on Rue des Rouairies. Carry on the D795. At the next roundabout, take the 1st exit onto Rue Louise Weiss. The residence is on the left.
Access by train	Dinan railway station 10-minute walk
Access by plane	Rennes airport (45 minutes) or Dinard airport (20 minutes)

## Facilities

Downtown	15 minutes' walk (1.8 km)
Sea	
Parking bus	Yes, location next to swimming pool
Tourist office	Dinan - Vallée de la Rance 9 rue du Château - BP 65 261 - 22105 DINAN Cedex Tél : 02.96.876.976 - Fax : 02.96.876.977